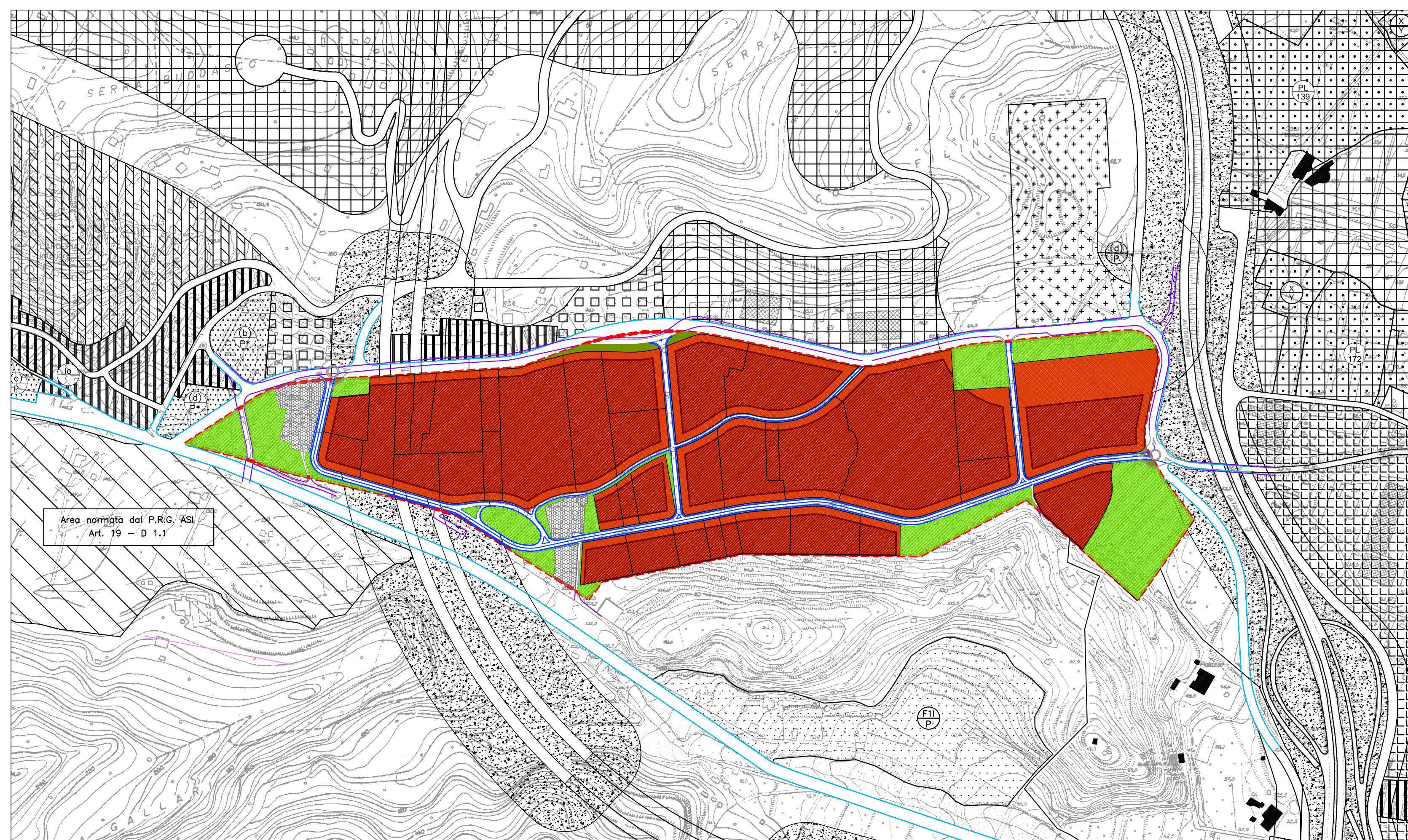


- MESSINAPERIL2000 -





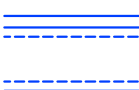
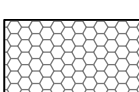




Ing. V. Leotta

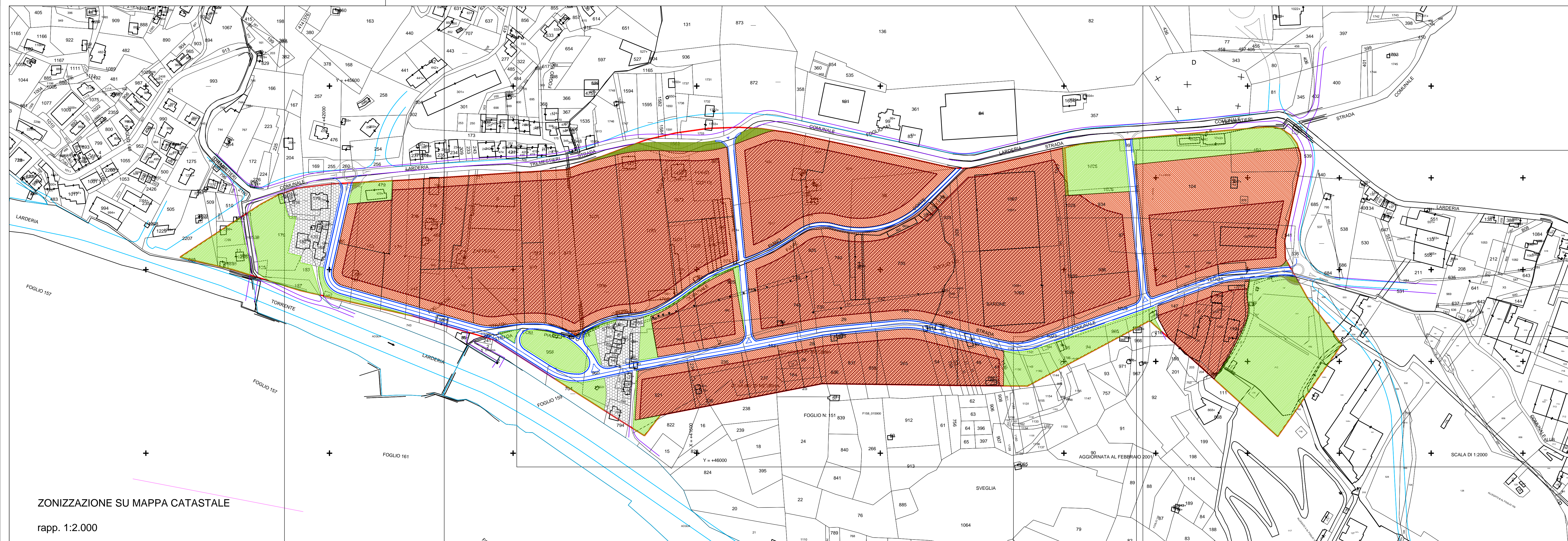
Revisione: Agosto 2017



rapp. 1:4.000

LEGENDA

	Area di intervento	mq 267.795
	Lotti insediamento capannoni I.R.S.A.P. e P.R.U.S.S.T. "Messinaperil2000"	mq 196.275
	Area destinata a verde e servizi	mq 39.206
	Fasce di rispetto	mq 1.866
	Viabilità di progetto	mq 20.950
	Agglomerati edilizi esistenti	mq 7.446
	Area di concentrazione volumetrica	
	Viabilità esistente (mq 2.052)	 Viabilità prevista dal PRG
	Proposta di sistemazione stradale	
(rappresentata a scopo esemplificativo in quanto esterna all'area di piano)		



rapp. 1:2.000